



THE DUPONT CIRCLE

A GLAMOROUS HUB
IN THE WORLD'S MOST
POWERFUL CITY

LEGEND

Preferred

HOTELS & RESORTS







WELCOME TO THE DUPONT CIRCLE

Following a dramatic transformation in collaboration with world-renowned designers Martin Brudnizki and the New York-based Clodagh, The Dupont Circle brings style and sophistication to the nation's capital.

The hotel's new dining experience, The Pembroke, described by Tom Sietsema of The Washington Post as "a cut from a different cloth.", Features contemporary American cuisine with global influences. Meanwhile, Doyle, a warm, lounge-like bar and a popular hub among DC's cosmopolitan set, offers panoramic views of Dupont Circle and cocktail list inspired by the 1950s and 60s, an impressive collection of Irish whiskeys and delicious menus.

Spacious guest rooms epitomize contemporary chic while The Penthouse Level, an exclusive floor made up of 13 suites including the spectacular Grand Penthouse Suite, brings luxury to a whole new level in the city.

GUEST ROOMS

Guest rooms recognize the hotel's distinctive 1950's architecture, employing a crisp "modern" aesthetic. Polished dark wood finishes combine with white marble bathrooms and classic mid-century designer furniture and lighting to create a sense of luxurious urban living.





SUITES





THE PENTHOUSE LEVEL

Our Penthouse Level includes Studio suites, many with terraces, our Signature suites with garden terraces and its jewel, the stunning new Grand Penthouse Suite.

All are individually and beautifully designed and feature those special touches that offer a warm, homely feel.





THE PENTHOUSE LEVEL

THE GRAND PENTHOUSE SUITE

Designed by the internationally acclaimed Clodagh, the two-bedroom Grand Penthouse Suite with panoramic views stretching as far as The Washington Monument, is one of the city's largest. It features a spacious lounge, dedicated dining area and fold-away cocktail bar which open on to a wrap-around, fully furnished garden terrace complete with fire bowl and heaters. Bedrooms also have their own seating areas and private terraces.

The layout with its long enfilade views along with the use of quality natural finishes, wood panelling, bronze and marble creates the sense of a grande city apartment and makes for a truly luxurious experience.





THE PENTHOUSE LEVEL



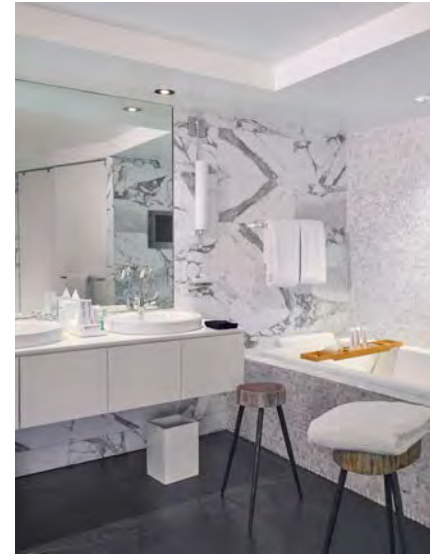
SIGNATURE TERRACE SUITES & STUDIO SUITES

Our Signature Terrace Suites offer sweeping views of the city. Individually designed, both suites feature and an oversized terrace with super comfy lounging areas.

Studio Suites, many with terraces, also boast great city views and come with bespoke furnishings, in-room lounge with hand woven rugs and warm textures throughout.

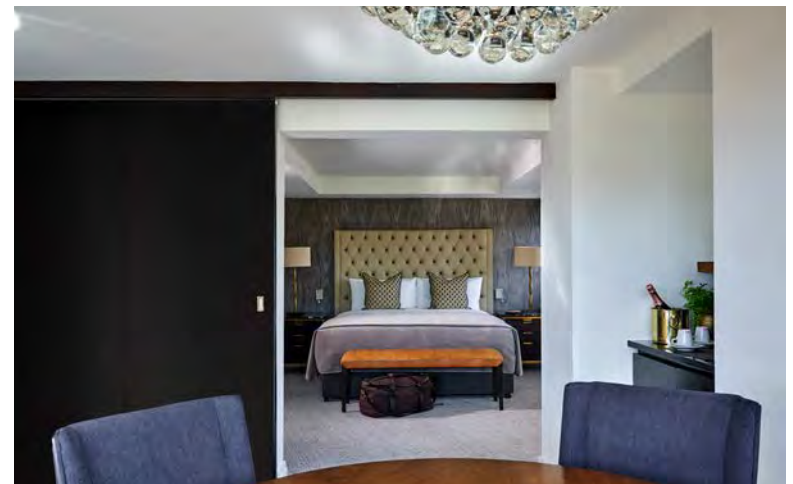


OTHER SUITES



JUNIOR & PARKVIEW SUITES

These elegant suites feature soothing, warm interiors and a generous open plan design evoking the sophistication of urban living, replete with custom artwork and furnishings.





RESTAURANT & BAR



A glamorous restaurant with bar and outdoor terraces, The Pembroke has been hailed by Washington Post food critic, Tom Sietsema, as "a cut from a different cloth" and offers contemporary American cuisine with global influences.





RESTAURANT & BAR



Evoking the era of crisply tailored suits, ice-cold martinis and mid-century glamour, Doyle, is a warm, club-like bar with panoramic views of Dupont Circle. Boasting large, outdoor patios, Doyle has quickly become one of DC's most sophisticated hot spots.



MEETINGS & EVENTS

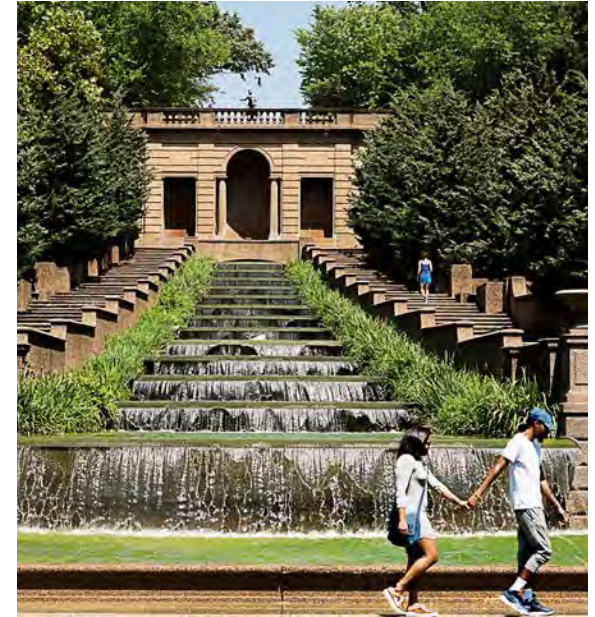
Imagine your gathering in a glorious space in the heart of Washington, D.C. That's what you get with a meeting at The Dupont Circle, with its timeless style, warmest of welcomes, and chic luxury in the city's most vibrant neighborhood.

With no fewer than six dedicated spaces, flexible across 10,000 square feet, bathed in natural light and beautiful garden views, we can help you create the perfect event.





SLICE *of the* CITY



WASHINGTON-POMP AND CIRCUMSTANCE

New York is like walking into a film, and Los Angeles is where those films are made. Chicago has muscular high-rise buildings and that lakeside location. But as the seat of Government, of institutions and triumphal boulevards, Washington DC is the true journey into the soul of America.

It's here that the decisions are made that affect the world; here that you'll feel the combined weight of history at the National Mall. The Smithsonian is the world's largest storehouse with no fewer than 19 museums. You'll find early Apple computers, Ford cars and Dorothy's red slippers from the Wizard of Oz at the National Museum of American

History on Constitution Avenue; Apollo 11 items at the National Air and Space Museum; Georgia O'Keefe paintings at the American Art Museum – and so much more.

It's a huge undertaking, and you'll need respite. At Arlington National Cemetery, you'll find sepulchral peace, and similarly contemplative moments at John F Kennedy's resting place on Sheridan Drive, plus views of the Lincoln Memorial and Washington Monument. Once rested, don't forget DC's smaller museums. The Phillips Collection in Dupont Circle has a great collection of French impressionist and American modernist masterpieces in a Georgian Revival house.

Newseum is a history by way of journalism, with newsreels and videos, reminding you that here in DC, news is made daily. The Hillwood Museum and Gardens in Cleveland Park – the former home of Marjorie Merriweather Post – has the largest collection of Russian imperial art outside Russia and great gardens while the International Spy Museum celebrates the art of espionage with such crowd pleasers as guns shaped as lipstick holders.

All this knowledge gathering demands a reward, and near the Mall you can stroll through famous Georgetown, where period houses are populated by the city's power-brokers. With cafés and bars, it's a great place to hang out and perhaps to hire a bicycle and pedal alongside The Potomac River. Washington will leave you wanting more.



TRAVEL HUBS

Within a 5-minute walk: Metrorail, Dupont Circle Station. Within a 10 to 15-minute drive: Ronald Reagan Washington National Airport, DCA, Union Station (Amtrak & Metrorail Station).

BUSINESS PARKS

Within a 5 to 10-minute walk: All city center business districts i.e., K street, Connecticut Ave, Embassy Row, Georgetown, Adams Morgan.

ATTRACTIONS

Within a 5 to 10-minute walk: Dupont Circle Fountain & Park, The Phillips Gallery Collection, Woodrow Wilson House. Within a 5 to 10-minute drive: The White House, The Washington Monument, National Zoo, National Mall & Memorial Parks, Lincoln Memorial, Vietnam Veterans Memorial, World War 2 Memorial, Verizon Center.

OUR FACILITIES

Total Bedrooms: 327 | The Penthouse Level: 13 Suites | Other Suites: 19 | Meeting Spaces: 7 | Max Meeting Capacity: 350
Business Center | Fitness Center | Valet Parking | Complimentary Wi-Fi
Restaurant & Bar: The Pembroke | Doyle | Doyle & Co

Loyalty Programme: **I PREFER**
HOTEL REWARDS

BOOKING CODES

GDS: Galileo PH 97603 | Sabre PH 011676 | Amadeus PH WASDCH |
Worldspan PH WASDC | DHISCO PH 7807

CONTACT

f /DupontCircleHotel @DupontCircHotel @dupontcirchotel

1500 New Hampshire Avenue NW, Washington DC, 20036, United States
T +1 202 483 6000 E dupontweddings@doylecollection.com
W doylecollection.com/dupont

ABOUT THE DOYLE COLLECTION

At the heart of our business is a warmth of service that stems from our family ownership, imbuing our properties with the familiarity of a member's club and the intimacy of a private home. Each of our eight hotels – landmark buildings in unrivalled city locations, has its own distinct personality that is rooted in, and authentic to, its neighbourhood.

Innovation and ongoing investment ensure a boutique, cosmopolitan yet local feel – as seen in our cool destination restaurants, bars and event spaces – while our heritage lends character to our vision of informal luxury, timeless style and the very best guest experience.



THE DUPONT CIRCLE

WASHINGTON DC

LEGEND™

Preferred

HOTELS & RESORTS